

UNIT M, CROWN INDUSTRIAL ESTATE - INDUSTRIAL

01



Once a site of a well-established global manufacturer, Unit M, within the Crown Industrial Estate, has undergone a major transformation under new ownership. The new owner wished to overhaul the entire property, breaking it up into seven modern individual business units. Central, entrusted with the waterproofing elements of the programme, refurbished the roofing and cladding to create a strong and durable building for the new occupiers.

LOCATION
TAUNTON

CLIENT
LANCER SCOTT

TIMESCALE
5 MONTHS

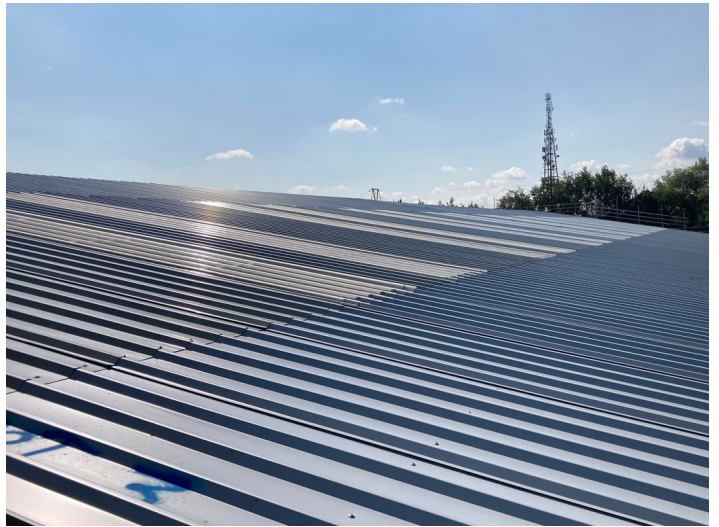
BUDGET
£500K

SIZE
7,800m²



CentralGroup
ROOFING & BUILDING SOLUTIONS

www.centralroofing.co.uk



Approach

The existing building was constructed with asbestos cement roof coverings and wall cladding. Due to the ageing of the roof, it was reaching the end of its serviceable life. Leaks were occurring from cracks in the old roof sheets and loose rusted fixings. The existing rooflights were brittle and ageing, meaning very little natural light inside the units.

The site is located close to overhead powerlines and a railway line. Central successfully planned crane lift usage working in partnership with Western Power and Network Rail.

Multiple new doors and windows were fitted on the unit, and working closely with the window installers we ensured that elevations, flashings and cills were installed before they arrived. We successfully coordinated with other trades to ensure the smooth completion of the project.

Solution

The new roof and walls were constructed from a built-up cladding system consisting of bright white liner panels, insulation quilt, spacer bar and brackets and outer profiled sheets. The colours were a mixture of goosewing grey, anthracite and merlin grey to provide an aesthetically pleasing feature. New insulated membrane-lined gutters were also provided and installed. Safety netting was in place under all rooflights to ensure health & safety. All materials were provided by Alphaclad.

